

**Demanding power
from the sun,
water from the air,
BET leader of air to water**

 **BET**
GLOBAL

Bestway Environmental Technology(Huzhou) Co., Ltd.
500 Xunzhi Road, Nanxun Economic Development Zone, Huzhou City, Zhejiang Province, China
T. +86-572-3061888-829 F. +86-572-3068666
W. www.thebetglobal.cn
Email: bet@thebetglobal.cn

AIR WATER GENERATOR(AWG)
PURE WATER FROM AIR
TO PEOPLE EVERYWHERE

Bestway Environmental Technology (Huzhou) Co., Ltd.

——Providing a revolutionary path to solve the global water crisis

【The Founder’s Journey: Twelve Years on the Road to Breaking the Walls】

In 2011, the chairman of the board of directors, Mr. Peng Cong, decided to devote himself to the technology challenge of “water to the air” and “healthy drinking water”. After 178 material experiments, Mr. Peng overcame the high efficiency enthalpy difference exchange system technology and material problems and MOFs crystal porous nano-moisture absorption material production problems, and gained dozens of core patents. In 2021, Mr. Peng invested 197 million RMB in Nanxun, Zhejiang Province, and founded BIE Bestway Technology, and built a new annual production capacity of 150,000 units of air to water generator and 700,000 units of intelligent healthy drinking water equipment in the industry park. In 2023, together with Mr. Liang Ping to set up Bestway Environmental Technology (BET) to expand the industrial chain from water technology to environmental technology, from water appliances to household appliances and realizing the epic leap from laboratory to industrialization in the same year.

【The technological gene of the game changers】

At a time when the global water crisis continues to escalate (26% of the population lacks safe drinking water, and the urban water shortage population is expected to reach 6 billion in 2050), Bestway Environmental Technology (BET) has reconstructed the water resources landscape with cutting-edge material science and intelligent Internet of Things (IoT) technology. The company's self-developed AWG technology ecology contains four core barriers:

- ▶The groundbreaking GENius enthalpy exchange system can collect more purified water with less energy, improving the efficiency of air to water production.
- ▶The world's first MOFs crystal porous nano-moisture absorption material factory mass production capacity, nano-scale pore structure than the traditional silica gel moisture absorption efficiency increased by 300%, the service life exceeds 15 years;
- ▶The DAWC intelligent capture system can operate stably in the humidity range of 10% -90%, and maintain an energy efficiency ratio of 85% in extreme weather conditions from -10 °C to 50 °C;
- ▶six deep purification system through the NSF/ANSI 61 certification, water quality indicators beyond the WHO direct drinking standard of 3 orders of magnitude, single machine daily production capacity to cover 12L-20T full scene demand.



【Nanxun Super Factory: Industrial Carrier for Air to Water Production】

The Nanxun Super Factory, which covers an area of 52000 square meters and was built with an investment of 197 million yuan, building the first industry 4.0

demonstration base in the field of air water generator:

- ▶Full-chain autonomy: from MOFs material synthesis, sheet metal precision machining (through laser cutting accuracy $\pm 0.1\text{mm}$), to the whole machine assembly to achieve 100% localization
- ▶Digital twin: MES system monitors 368 process nodes in real-time, with a product pass rate of 99.2%
- ▶Green intelligent manufacturing: annual power generation from photovoltaic roof is 5.8 million degrees, and water recycling rate reaches 92%.
- ▶Capacity guarantee: 8 fully automated production lines can achieve an annual output of 1 million units of equipment, 72-hour global delivery of core components.

Mission: To make air an inexhaustible second source of water for humanity

Vision: Anchor the domestic production base and build a global trade platform.

[Global Industry Empowerment]

The company is building a three in one solution of "technology+manufacturing+service":

- Build modular water production stations for municipal areas, a single system with a daily water supply capacity of 500 tons (equivalent to 1/5 of the traditional desalination plant occupies the land)
- Deployment of mobile emergency water trucks in cooperation with UNHCR, which have supplied 120,000 tons of safe drinking water in drought-stricken areas of Africa.
- Unique "air water bank" business model, through the IoT water platform to realize remote operation and maintenance of equipment and digital management of water resources.
- Established a 150 million RMB industrial fund and incubated 22 upstream and downstream enterprises to form an air-to-water industrial cluster.

[World-class co-operation map]

Technology: Joint laboratory with Ningbo Institute of Materials, Chinese Academy of Sciences, and AI algorithm research center in Israel.

Market: Beijing, Shanghai, Guangzhou, India, Israel, the United Kingdom, the United Arab Emirates and other countries and regions have set up branches.

Certification system: ISO 9001, 14064 carbon footprint certification, CE, CB, UKCA, ETL and 27 other international qualifications.



Main Products

BIBO-X



NOAM-3



NOAM-2



AO100T-K6/AO100L-K6



AO100T-T2/AO100L-T2



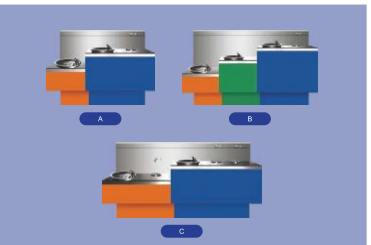
Wall Mounted Water Bottle Refilling Station



Wall mounted water boiler



Outdoor Standing Drinking Water Fountain



Aguaer-A20/BWT-A20/BWT-A20S



BWT-A12



BWT-A500



BWT-A5000



- 70% of the Earth surface is covered by water but only 6% is fresh water
- 2.4% of fresh water can be used to sustain human life
- 50% of underground water and surface water have been contaminated
- China is one of the 13 countries of severe water shortage
- China supports 20% of the world population with only 7% of water resources
- More than 80 million people in rural China have to walk more than one kilometer for drinking water

The world faces the crisis of fresh water exhaustion and soil pollution and deterioration, which makes it harder and harder for people around the world to gain access to clean drinking water

INNOVATIVE TECHNOLOGY

Through the use of a highly efficient air intake system, the unit continuously feeds air into the internal water production system.

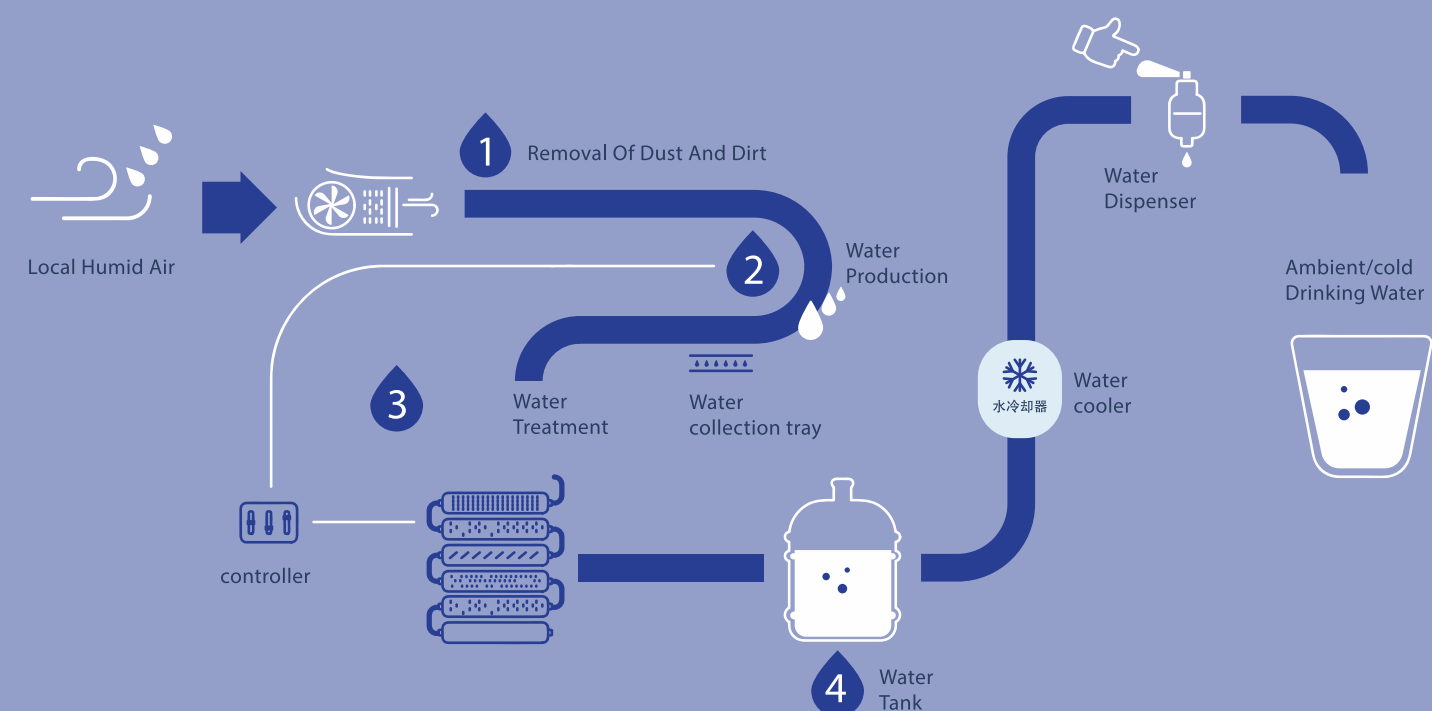
The unique air purification device can effectively remove impurities in the air.

The GENius system can use less energy to extract more pure water and increase the efficiency of air to water production.

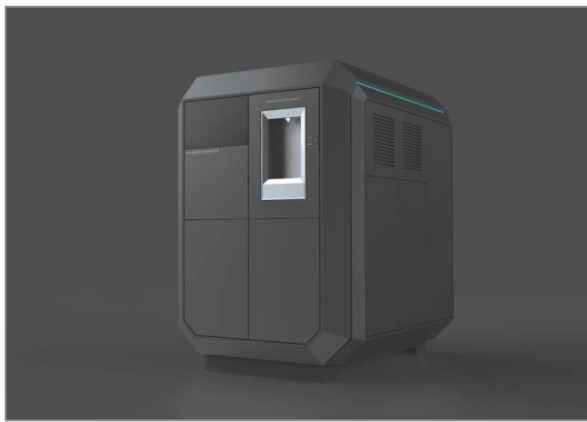
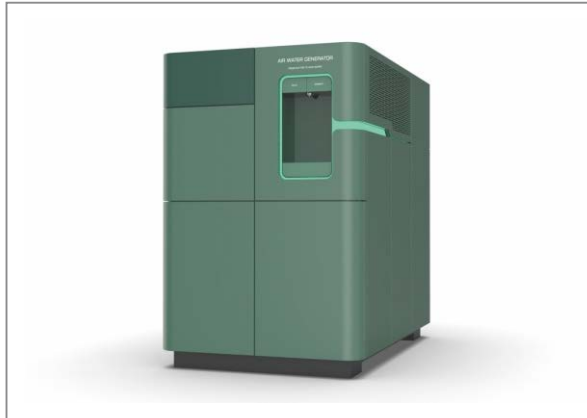
Unique purification system that effectively removes sediment particles and impurities through multi-layer filters to fully purify the resulting water, redefining air-to-water process.

The unique water system utilizes water flow multiplication technology to stimulate the internal circulation of water molecules, keeping the water fresh at all times.

Extract water from air



The 4th Generation of commercial Air Water Generator



Air Water Generator Series



GENNY 3

The first choice for healthy indoor drinking water, no need for unnecessary procedures, plug and play

GENNY 3 is a perfect fit for home or office; Can provide water to 18-27 people. 1L to each person; Selected as the CES 2019 Awardee for Best of Innovation for Tech for a Better World, economically priced with water production cost at only 2-4 cents per liter

- Premium water quality
Fresh, clean drinking water
 - Environmentally friendly
Reduce plastic and water transportation losses
 - Controlled water temperature
More efficient utilization
- Smart networking
Ongoing & predictive maintenance and support OTA firmware updates
 - Flexible working modes
For electricity & water optimization
 - Air purification
Complete indoor air circulation while producing water

MODEL NO	GENNY 3
Water generation capacity	Up to 30 liters/ 8 gallons a day (in Ideal conditions)
Integrated water tank	Up to 27 liters / 7 gallons
Water temperature	Cold: 41°-44.6°F (5°-7°C) Hot: 203°-210°F (95°-99°C)
Power	120VAC/60Hz, 230VAC/50Hz
Power consumption	US: 875W in normal operation/1425W maximum, during water heating EU: 875W in normal operation 2900W maximum, during water heating
Energy consumption	0.35KWH/Liter for water generation in standard conditions (26.7°C, 60% RH)
Dimensions (LxWxH)	54cm x 42cm x 130cm/1.77ft x 1.37ft x 4.26ft
Weight	80kg/176lbs when dry
Air flow	350 m3/h
Air filtration	Multi-stage air filtration device
Water purification technology	Physical adsorption, chemical sterilization

Air Water Generator Series



Aguaer-A20

BWT-A20

BWT-A20S

HOT AND COLD WATER

- Available in different color
- Touch Screen with automatic lock
- UV light& Filtration system



- Air water generator is a device that extracts pure water from the air. No need for water sources, plug and play
- Our air water generator has a seven-stage filtration system with NSF standards, bringing you the highest quality water
- Intelligent monitoring, TDS value, power consumption and water production, real-time detection, real-time data
- Simple and fashionable design
- Timed circulation, fresh water preservation

Model	Aguaer-A20, BWT-A20/A20S	
Supply Power	220V 50Hz/110V 60Hz	
Total Power	0.975kw	
Compressor power/Cooling power	0.46kw	
Heating Power	0.5kw	
Water Production Capacity	20 Liter/day @ 30° C & 80% RH	
Working Conditions	Temperature	15° C - 45° C
	Humidity	25% - 100% RH
Water Tank	15L(upper tank)+1.5L(lower tank)	
	2L(cold tank)+1.5(hot tank)	
	Always showing on display	
Filtration system	PPF+CTO+UF+T33+UV	
Refrigerant	R134a	
Defrost Method	Natural defrosting	
Operation sound level	≤45Db	
Net Weight	45 kgs	
Size (LxWxH) 尺寸	300*440*1150mm	

- Split Air Water Generator 70L/Day, Hot & Cold Water
- No need for water source, move as you like
- Intelligent visualized touch control design
- Water preservation, mineral water
- Intelligent monitoring, real-time data

Model	BWT-A70	
Power Supply	Single phase, AC 220V/50Hz, 110V/60Hz	
Compressor	R134a, 3 Years Warranty	
Water Capacity	70L/ Day (30 °C,80%RH)	
Filtrations system	HEPA Air Filter + PP + CTO+ UF+ Mineralization Filter+ UV	
Container Load Qty	60units/20",125units/40",150units/40HQ	
Water dispenser	Hot water tank	1.5L, Heating Power: 500W
	Cold water tank	2L, Cooling Power: 80W- 98W
	Upper storage tank	11 L with UV
	Lower storage tank	25 L with UV
	Product dimension	450*300*1154 mm
	N.W./ G.W.	17.0/18.0 (Kgs)
Air water generator	Generation Power	700W
	Collection tank	SUS 304 2L with UV
	Product dimension	460*302*710 mm
	N.W./ G.W.	27.0/30.0 (Kgs)

Air Water Generator Series

Water Making Outdoor, Drinking Pure Water Indoor



BWT-A70

Air Water Generator Series



BWT-A12

- With our unique technology, under the condition of RT27 °C /RH60%, this air water maker can produce 10-12L of water in 24 hours. Working temperature is 15°C-40 °C, the machine consumes 480W per hour and has UV sterilization system and mineralization cartridge to provide users with ultra-pure taste of drinking water. The whole machine is controlled by computer with adjustable temperature.
- Innovative compact design
 - Three inverted filter cartridges for easy replacement, PPF + UF
 - Provides hot and cold water at one button
 - 10-12 L/Day water production capacity under RT27 °C /RH60%

Model	BWT-A12
Power Supply	230v/50hz; 110v/60hz
Power Consumption	500W
Rated Current	3.5A
Water Capacity	12L/Day (27°C,RH60%)
Full Water Quantity	5.5L
Noise	<60dB
Air Circulation	450m3/hr
Refrigerant /Charge	R410A
Working Temperature	5°C-35°C
Recommend Room Size	50-70M2
Auto Defrost	0-24Hr
Filtration System	PPF+CTO+UDF+UF+UV+Mineral

- Power failure indication
 - Child lock feature to ensure safety
 - Hot, Cold water dispensing (Soda water options)
 - TFT Touch screen control and indications
- WIFI enable & Mobile App Control
 - 5 stage water filtration
 - 38-40L/Day water production capacity under RT30 °C /RH80%

AWG 40L is a standard model for home and large office use. It produces 38-40L of clean water in just 24 hours, under the ideal conditions of RT30 °C /RH80%. It is a fully automated system that comes with 5 stage filtration including UV sterilizer system and mineralization filter and works with touch screen display and easy to operate. Our BWT-40L AWG is available in two models - Classic 40L-CX and Premium 40L-PX.

Model	BWT-A40
Power Supply	230V/50hz 110V/60HZ
Power Consumption	700W
Rated Current	3.1A
Water Capacity	40L/Day(30°C , 80%)
Full Water Quantity	5.5L
Noise	≤60dB(A)
Air Circulation	450m3/hr
Refrigerant /Charge	R410A
Working Temp.	5°C-35°C
Recommend Room Size	50-70 m ²
Control Type	Electronic
Auto Defrost	0-24Hr
Filtration System	PPF+CTO+UDF+UF+UV+Mineral

Air Water Generator Series



BWT-A40

Commercial use air water generator series



BWT-A100

- Production Capacity 100 Liters/24Hr
- Energy Consumption 1.32 KW
- Internal Power Supply AC 220V 50Hz, AC110V 60HZ, single-phase voltage
- Water Tank 40L Refrigerant R410A
- Weight 140 KG Dimension 1250*542*1263MM
- Loading Quantity 20GP 14 PCS 40HQ 54 PCS



BWT-A250

- Production Capacity 250 Liters/24Hr
- Energy Consumption 3.4KW
- Internal Power Supply AC 220V 50Hz, AC110V 60HZ, single-phase voltage
- Water Tank 45L Refrigerant R410A
- Weight 550 KG Dimension 1860*950*1660MM
- Loading Quantity 20GP 5 PCS 40HQ 12 PCS



BWT-A500

- Production Capacity 500 Liters/24Hr
- Energy Consumption 6.3 KW
- Internal Power Supply AC 380V 50Hz, AC440V 60HZ, three-phase voltage
- Water Tank 90L Refrigerant R407C
- Weight 810 KG Dimension 1935*1150*1710MM
- Loading Quantity 20GP 5 PCS 40HQ 10 PCS

With the worsening of global environmental pollution, the world freshwater resources will become increasingly scarce. Although there is no shortage of fresh water in many places, water resources are too polluted to drink, and the water is rich in air. so making water from air is undoubtedly the best way to solve the problem of drinking water in water-scarce areas.

Commercial use air water generator series

No water source needed, making water from air, no pipeline and waste discharge, timing sterilization, automatic circulation of fresh water to assure safety and healthy drinking water. PLC control system, high efficiency heating exchange technologies. Compared with other products in the market, our machine is more stable, low noise, strong water production ability, energy savings of 40%.



BWT-A1000

- Production Capacity 1000 Liters/24Hr
- Energy Consumption 12.3 KW
- Internal Power Supply AC 380V 50Hz, AC440V 60HZ, three-phase voltage
- Water Tank 180L Refrigerant R407C
- Weight 1070 KG Dimension 2165*1550*2076MM
- Loading Quantity 20GP 3 PCS 40HQ 7 PCS

BWT-A2000

- Production Capacity 2000 Liters/24Hr
- Energy Consumption 24.6 KW
- Internal Power Supply AC 380V 50Hz, AC440V 60HZ, three-phase voltage
- Water Tank 400L Refrigerant R407C
- Weight 2030KG Dimension 2160*3050*2076MM
- Loading Quantity 20GP 1 PC 40HQ 3 PCS

Commercial / Industrial Use AWGs series

Scope of Application :

Water-deficient area, the Middle East, Africa Plateau and Gobi area, the South Amercian, Tibet
Oil drilling platform, factories and mines, seafaring Bottling plant, Mobile water supply station
Hospital, School, public place Border, desert, island water-deficient area

BWT-A5000

Production Capacity 5000 Liters/24Hr

- Energy Consumption 64KW
- Internal Power Supply AC 380V 50Hz, AC440V 60HZ, three-phase voltage
- Water Tank Refrigerant R407C
- Weight 3900 KG Dimension 2200*5650*2130MM
- Loading Quantity 20GP 1 PC 40HQ 2 PCS



BWT-A5000

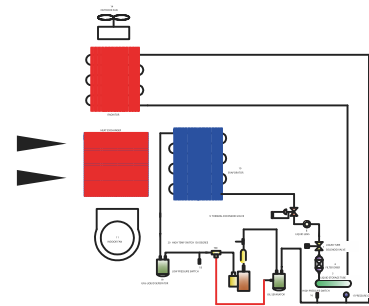


Commercial / Industrial Use AWGs series

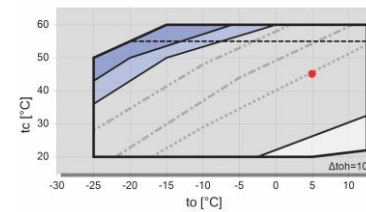
A 10000 liter / 24hr AWG is custom-made, equipment needs to be installed at the scene. The base is used in 5 channel steel, 4 sections of water intake, and 1 main engine. There are two group compressors at the main end, which are connected between the control system and the pipeline in the whole equipment, and the condensing system includes cooling condenser and cooling fan. Centralized water purification equipment is required.



BWT-A10000



CENTRAL WATER PURIFICATION SYSTEM



ICON
■ NEED OIL COOLING
■ ADDITIONAL COOLING
— CR ≤75%
— CR 100%
--- CR 75%
--- CR 50%
--- CR 25%
--- MAX TC IS USED FOR SPECIFIC COMPRESSOR
● A

New Industrial-use Air Water Generator (with Heating Exchange System)

Model	Power Supply	Input Power	Water Production (Liters/24Hr) @ 30°C & RH-80%	Compressor			Refrigerant			Air volume		Fan		Machine Dimension (L*W*H) (mm)	Machine Weight (kgs)	Working condition		Control system (Carel)
				Compressor Type	Compressor Qty	Phase Protection	Gas Type	Control Type	Gas charge amount	Circulating air volume	Heat exhaust air volume	Recycle Fan (High efficient centrifugal fan)	Heat Removal Fan (Efficient axial flow fan)			Temperature	Humidity	
BWT-A100-38	AC 220V 50/60Hz single-phase voltage	1.33 kw	103 liters	Enclosed vortex compressor	1	- Delay Protection - Hi & Low Pressure Protection	R410A	Capillary	0.75 kg	650 m3/h	850 m3/h	1 pcs	1 pcs	1250*542*1263	140 kgs	Standard working temperature: 15°C - 45°C	30% - 100%	SPC
BWT-A250-38		3.4 kw	262 liters		1	- Overheat & Overload Protection			2.4 kg	1600 m3/h	2100 m3/h	1 pcs	1 pcs	1860*950*1660	550 kgs			SPC
BWT-A500-38	AC 380V 50Hz three-phase voltage	6.3 kw	480 liters		1	- Phase-sequence Protection - Delay Protection - Hi & Low Pressure Protection - Overheat & Overload Protection	R407c	External balance type Thermal expansion valve	4.7 kg	3000 m3/h	4000 m3/h	1 pcs	1 pcs	1935*1150*1710	810 kgs			PLC
BWT-A1000-38		12.3 kw	965 liters		1				2*4.7 kg	5900 m3/h	7800 m3/h	2 pcs	2 pcs	2165*1550*2076	1070 kgs	In case the temp below 15°C or higher 45°C, System needs to be customized		PLC
BWT-A2000-38	or	24.6 kw	1940 liters	Emerson Danfoss	2				2*8 kg	12000 m3/h	15500 m3/h	4 pcs	4 pcs	2160*3050*2076	2030 kgs			PLC
BWT-A5000-38		64 kw	4970 liters		4				4*9 kg	31000 m3/h	39000 m3/h	8 pcs	8 pcs	2200*5650*2130	3900 kgs			PLC
BWT-A10000-38	AC 460V 60Hz three-phase voltage	128 kw	9940 liters		8				8*9 kg	62000 m3/h	78000 m3/h	16 pcs	16 pcs	2200*11300*2190	8200 kgs			PLC

AC 220v 50Hz, 380V 50Hz, 30°C 80% HR

Mobile Small-scale Air Water Generator



M1

M1 is a mobile small-scale water generator and is ideal for schools, hospitals, construction sites, temporary localities, commercial locations and residential houses. The water reservoir is external.

MODEL NO	M1
Water generation capacity	Up to 220 liter/day
Water temperature	Ambient water
Water purification technology	Utilizing advanced fiber and microbiological treatment technology, sterilizing UV lamp, and ultrafiltration technology in multi-stage filtration system. Achieving high purity, delicious drinking water by balancing the PH of water with essential minerals
Working environment	Temperature ≥ 15 °C Relative humidity ≥ 20%
Power consumption	2.2kW/h min up to 3.5kW/h max
Dimensions (L x W x H)	1.59m x 0.84m x 1.30m
Weight	350kg
Air Filtration	Sub-micron barrier filter that eliminates < 2.5mm particulate matters
External water treatment and storage tank	Treatment system: Ozone generator, Water pump and Carbon Filter Water tank: External tank is required

Medium-scale industrial Air Water Generator



GEN-M Pro

Provides up to 600 liters of fresh, clean drinking water from air daily

Watergen's GEN-M Pro unit is a mid-sized, mobile air-to-water generator that provides an ideal solution for schools, hospitals, parks, construction sites, temporary shelters and residential buildings which are looking for a new source of water other than tap water. The GEN-M Pro requires only one electrical outlet and no other plumbing or infrastructure. Using Watergen's patented GENius technology, the GEN-M Pro operates efficiently and produces up to 220 liters of pure, safe and delicious drinking water per day from the air. The GEN-M Pro utilizes innovative water purification technologies for sediment filtration, mineralization, activated carbon and NanoCeram@ filters. After the water purification process, important minerals such as calcium and magnesium are added. The final quality of the drinking water is protected by germicidal UV-C. The GEN-M Pro is one of the most energy efficient air-to-water generator on the market, producing more drinking water with less electricity. The GEN-M Pro works in all climatic conditions, only at temperatures above 15 °C and humidity greater than 20%. It can provide lifetime water to 500-800 people with 1L to each person, cost 2-4 cents per liter.

MODEL NO	GEN-M Pro
Water generation capacity	Up to 600 liter/day
Water temperature	Ambient water
Water purification technology	Sediment filtration, mineralization, activated carbon, microbiological treatment
Working environmental	temperature: 18 - 40 Celsius Relative humidity: 20% - 90%
water tank	External water tank equipped
Power consumption	5.6kW/h min up to 4 kW/h max
Power	208 / 400 VAC 1-phase , 60/50 Hz
Dimensions (L x W x H)	1.46m x 1.50m x 1.73m
Weight	715kg
Air Filtration	Multi-stage air filtration device
Circuit breaker current	230V / 50 Hz - 16 A 240V / 60 Hz - 2 x 16A

Large-scale Air Water Generator Station



GEN-L

Provides up to 6000 liters of fresh, clean drinking water from air daily

GEN-L is used in countries with different air quality conditions and in areas with the worst environments. It provides high-quality drinking water in many regions of Asia, the Middle East, Latin America, Africa and the United States etc.

- Fresh, safe drinking water from air throughout the day
 - Produces up to 6000 liters of drinking water per day
 - Water production starts from RT15 °C /RH20%
 - Off-the-grid solution, no plumbing needed
- Ready for access and use
 - Reduces logistic, transportation, storage cost and plastic waste
 - Can integrate with other units to create drinking water to customer
 - Complies with international drinking water safety standards

Specifications

GEN-L	GEN-L
water generation capacity	Up to 6000 liters per day
water generation efficiency	350 Wh/liter
Dimensions(L x W x H)	2.85m x 2.23m x 2.64m
Weight	2630kg
Energy consumption	Nominal 60kw/h, peak power up to 90 kw/h
Air filtration	Sub-micron barrier filter that eliminates<2.5mm particulate matters
water purification	Utilizing advanced fiber and microbiological treatment technology, sterilizing UV lamp, and ultrafiltration technology in multi-stage filtration system. Achieving high purity, delicious drinking water by balancing the PH of water with essential minerals

Trailer-removable Air Water Station



GEN-M

MWT is a customized heavy-duty trailer outfitted with our Gen-M Atmospheric Water Generator

A mobile solution after an emergency incident or natural disaster; Water generation capacity up to 800 liters/211 gallons a day in ideal condition (26.7 °C, 70% humidity); Can provide lifetime water to a community of 500-800 people. 1L to each person

- Highly mobile
 - Common use
Indoor and outdoor usage
 - No need in electric grid
Dispenses water in any places
- No need in water source
Produces water in areas with no potable water source
 - Fast assembling
Fast and easy deployment in most weather conditions, remote areas and difficult to access locations
 - Dealing with emergency
Ideal for long term sustainable water generation throughout all phases of emergency

Specifications

MODEL NO	GEN-M
Water generation capacity	Up to 800 liters/211 gallons a day in ideal condition
Integrated water tank	200 liters/53 gallons
Power consumption	Nominal ~5.6kW/H - Max 10kW (at start up)
Water generation efficiency	250Wh/liter
Dimensions (LxWxH)	4.90m x 2.40m x 2.13m / 16ft x 8ft x 7ft
Weight	2631kg / 5,800 lbs (Trailer 1043kg/2,300 lbs)
Air filtration	Multi-stage air filtration device
Water purification technology	Based on sediment filtration, mineralization, activated carbon, microbiological treatment

Air Water supply emergency rescue vehicle



ERV

Customized heavy-duty truck equipped with Watergen's GEN-M, providing clean drinking water to people in emergency situations. Ideal for long-term sustainable water generation throughout all phases of emergency and crisis responses; Can provide lifetime water to a community of 500-800 people. 1L to each person;

- No need in water source
Generates water in areas with no potable water source
 - Efficient envery
Caterpillar 18KVA Diesel Generator
 - No need in electric grid
Operable even in areas without an electric grid
- Multi-usage space
Space to store emergency medical supplies and provisions
 - Fast assembling
Fast and easy deployment in most weather conditions, remote areas and difficult to access locations
 - Portable power source
Installed rechargeable DC outlets

MODEL NO	ERV
Water generation capacity	Up to 800 liters/211 gallons a day in ideal condition
Integrated water tank	200 liters/53 gallons
Power consumption	Nominal ~5.6kW/H Max 10kW (at start up)
Water generation efficiency	250Wh/liter
Dimensions (LxWxH)	2.4m x 7.3m x 2.7m / 8ft x 24ft x 8.75ft
Weight	780kg / 1,720lbs when dry
Air filtration	Multi-stage air filtration device
Water purification technology	Sediment filtration, mineralization, activated carbon and microbiological treatment by UV lamp

Attachable device: 1000-1500L water reservoir; 500L fuel tank for one week long operation; Emergency Lighting; Custom logo or paint, WiFi

Vehicle Air Water Generator

An integrated solution for water supply for private cars and public transportation. Can be used in a wide range of public transportation and private vehicles. Highly efficient production of up to 30 liters / 7.9 gallons of high quality drinking water per day.

Advantages

- Drinking when connected to electricity: no other equipment is needed except for the car
- Adjustable water temperature: cold water and room temperature drinking water can be provided
- Resource saving: Ideal alternative to bottled water

Features

- Customized water storage units
- Water purification technology: sediment filtration, mineralization, activated carbon adsorption, bactericidal treatment
- Microbiological treatment



Home Use Water Dispenser Series

The new smart &sleek Paradise water dispenser



Providing 24/7
Hot &Cold water
All year round
Shabbos& Yom
Tov



NOAM-3

Suitable for your home,office,Shul,Etc. Innovative design,safe ,economical,and strictly kosher.

Features

- has two types of water hot water and ice water;
- has a child lock function to prevent children from accidentally touching it;
- The hot water button is equipped with a lock to prevent children from accidentally touching and causing burns;
- The heat tank has a capacity of 6 liters, and can meet the drinking water needs of a family of three people per day by heating once. An additional heating device is installed at the bottom, which can maintain the water temperature at 90 °C for a long time;
- Mechanical pressure tap is used, and water can be taken normally after power failure

Model	NOAM-3	
Type:	Hot / Cold / Normal Water Dispenser	
Dimensions	290 * 375 * 360mm	
Tank Capacity	Cold: 6L	Hot: 1.5L
Extraction Rate	Cold: 1.8L/H	Hot: 6.8L/H
Power Requirement	220-240VAC 50Hz	100-120VAC 60Hz
Power Consumption	Cold: 100W	Hot: 1200W+65W

Home Use Water Dispenser Series

The new smart &sleek Paradise water dispenser



Say Goodbye
to bottled
water



NOAM-2

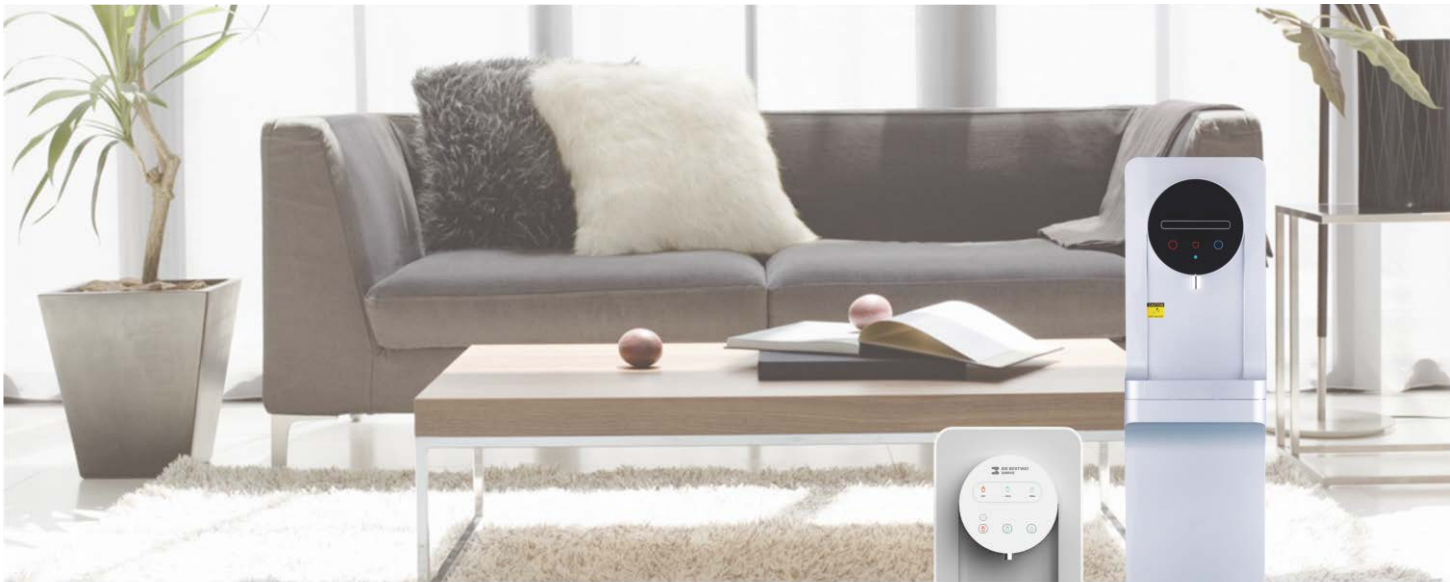
Features

- has three types of water,hot water, normal temperature water, and ice water;
- child lock function to prevent children from accidentally touching it;
- The hot water button is equipped with a lock to prevent children from accidentally touching and causing burns;
- The hot tank has a volume of 7.5 liters, and can meet the daily drinking water needs of a family once heated.
- An additional heating device is installed at the bottom, which can maintain the water temperature at 90 °C for a long time;
- Mechanical pressure tap is used, and water can be taken normally after power failure

Model	NOAM-2	
Type:	Hot / Cold / Normal Water Dispenser	
Dimensions	310 * 380 * 450mm	
Tank Capacity	Cold: 7.5L	Hot: 1.5L
Extraction Rate	Cold: 1.8L/H	Hot: 6.5L/H
Power Requirement	220-240VAC 50Hz	100-120VAC 60Hz
Power Consumption	Cold: 100W	Hot: 1200W+65W

Home Use Water Dispenser Series

T2 series Counter top & Floor standing Hot /Cold Water Dispenser



Features

Attractive, streamlined design, Plastic-injected materials from South Korea

High-quality and easy-to-replace hot water safety tap for child safety.

Low noise output

Two different filtration systems available. Quick filter installation for replacement.

RO type with 6.5L cold-water tank available

Advanced In-Tank UV Sanitization, to ensure the safety and healthy of drinking water

Various color available

AQ100T-T2 AQ100L-T2

Model		AQ100-T2
Type		POU
Variants		Hot & Cold
Cooling system		Compressor
Heating system		Internal Heating
Hot Tank	volume	1.5L/ 2L
	Capacity	5L/H ≥ 90 C
	Consumption	500W
Cold Tank	volume	3.7L
	Capacity	2L/H, 5-10 C
	Consumption	80-98W
filtration system	UF	PP+CTO+UF+T33
	RO	PP+CTO+RO+T33
Dimensions		43x30x48cm (Counter top) 43x30x113cm (Floor Standing)



Home Use Water Dispenser Series

K6 series Counter top& Floor standing Hot /Cold Water Dispenser



AQ100T-K6 AQ100L-K6

Multi-stage filtration removes common water contaminants to dramatically improve water taste and odor.

Two different filtration system available, quick fitting let you easily replace the filter cartridge.

- 4 stage UF filtration system
- 4 stage RO filtration system
- PP sediment +Pre-activated Carbon + RO +Post Carbon

Features

Attractive Streamlined Design

Two different faucets

Mechanical faucet Dispensing

Safety Lock for Hot Water Faucet for Children Protection

Little noise that you could not even hear it when the machine is working

Advanced In-Tank UV Sanitization, antivirus and healthy, to ensure the safety and healthy of drinking water

Various colors for your choice

Model		AQ100-K6
Type		POU
Variants		Hot & Cold
Cooling system		Compressor
Heating system		Internal Heating
Hot Tank	volume	1.5L/ 2L
	Capacity	5L/H ≥ 90 C
	Consumption	500W
Cold Tank	volume	3.7L
	Capacity	2L/H, 5-10 C
	Consumption	80-98W
filtration system	UF	PP+CTO+UF+T33
	RO	PP+CTO+RO+T33
Dimensions		43x30x48cm (Counter top) 43x30x113cm (Floor Standing)

Home Use Water Dispenser Series

LC20-T03NP / BL03NP Platinum Hot and Cold Water Dispenser



Features

Compactly designed water cooler in a wide range of colors, equipped with Extra Hot button to heat the water up to 98 degree Celsius.

Full digital high tech control Hot and Cold water dispenser

Hot water faucet specially designed to protect children from scalding

20BN6 Dispenser & Fridge

An extended version of our compact dispenser, including a 20 liters cooling compartment. The fridge is equipped with cooling sensor to reach 2-8 degrees Celsius, as well as an evaporation system for disposal of remaining water from fridge bottom.

Ultra quiet operation

Stainless steel water tanks

Suitability to high calcium level water

Full digital control

Hot water safety tap for children protection

Suitability for various water bottles sizes

		LC20-T03NP	LC20-BL03NP
Fridge	Fridge Temp range	/	2 - 8 °C
	Fridge Volume	/	20 L
Cold	Power Consumption	95 W	110 W
	Refrigerant	R134A (32g)	R134A (48g)
	Digital Temp. Control	4 -15 °C	
	Water Capacity	2 L / h (10°C)	
Hot	Power Consumption	500 W	
	Heating Element	External 0 Mica Band Heater	
	Digital Temp. Control	84 – 88 °C	
	Extra Hot	98 °C	
	Safety Thermostat	Manual Reset Thermostat 105 °C off	
	Water Capacity	5 L / h (90 °C)	
Power Rating		230 -240 VAC, 50Hz	
Water Tanks		Stainless Steel - 316	
Noise Level		45dB	
Dimensions		310(W)*380(D)*440(H)	310(W)*370(D)*960(H)
Child Safety		Safety Button	

Home Use Water Dispenser Series

36L Point-Of-Use Water Cooler



Features

Directly connect to municipal tap water

Preventing from dry-heating

Optional with the microcomputer control system.

Alarming if overflow or trouble occurs.

Stainless steel 304 side panel, painted front panel

Optional with UV lamp and 4 stage UF filtration system.

Place cup, glass or mug directly under dispensing faucet. Press and hold BLUE COLD water button to start water flowing. Release this button to stop cold water from flowing.

Place heat-safe cup, glass or mug directly under dispensing faucet. Press and hold RED UNLOCK for one second then, simultaneously press and hold RED HOT water button to start water flow. Release this button to stop hot water from flowing.

Model	36L	
Function	Hot & Cold water	
Varients	Cold & Ambient	Hot & Cold
Specifications	Internal or external heating modes SUS304 hot & cold reservoir 1.2 lt. hot tank SUS304 (1.8lt or 4lt bigger hot reservoir for your option) 3.8 lt. cold tank SUS304 Compressor cooling High efficiency compressor with CFC free (R134a refrigerant) Heating Watt: 400W (optional 675W or 800W bigger heating element) Cooling Watt: 80-98W Rated Voltage: 220 -240V/50Hz 110 -127V/60Hz Heating Capacity: ≥ 90Deg. C, ≥5L/Hr Cooling Capacity: ≤ 10Deg. C, ≥2L/Hr Product Dimensions: 33 x 30 x 99 cm	
Carton Size	38 x 37 x 100 cm	
N.W / G.W (Kgs)	19 / 21 Kgs	
Load Quantity	20' Ft	40' Ft
	200 pcs	380 pcs

Water Boiler Series



C22

CF SERIES ENERGY-SAVING INSTANT WATER BOILER

Energy-saving

Water and electricity separation, experience the latest BOPE technologies , compare to traditional heating element, save energy above 30%.

Intelligence

Electronic sensor & intelligent control

Flash-heating

5 seconds out of boiled water, section heating, complete boiling in one time.

Safety

No scale, long life -span, reliable for long time using.

Healthy

No “re-boiling water”, no “mixed water” , protect the safety of drinking water

Convenient

Removable drip tray & lean body, CUP function is suitable for different kinds of cups

With the high-tech heating membrane technology & the advanced two step heating system and solenoid valve controlling system, our instant water boiler could offer 36L/H hot water with only 2200W heating power.

Rated Voltage/Frequency: AC110V/60Hz, 220V / 50Hz
Control Type: VFD Digital Display
Heating Power: 1500W / 2200W
Water Tank Material: SS304 / ABS / Wire Drawing Panel
Accumulation Tank: 1.0L
Membrane Film Heating Technology
Feed Pressure (Mpa): 0.02 -1
First Stage Water Temperature: 55℃(Adjustable)
Second Stage Water Temperature: 90℃-100℃
Instant Boiling Water: 5 Seconds Boiling
Hot Water Capacity: 36L / H
Dimension: 377mm * 180mm * 375mm
Weight (kg): 8.0 KG

Water Boiler Series



KW SERIES INTELLIGENT WALL-MOUNTED WATER BOILER

■ High efficacy, Constant-temperature and continuous water supply

Step by Step Heating by Layer

1.Wall Mounted

The KW series water boilers, when installed is suspended from mounting screw located into keyhole slots at the back of the unit. This series water boilers are flexible and versatile making them at home in almost any working environment. The busier the company or organization, the more effective the hot water boiler is. Their simple, instant operation is ideal for a bustling office, shop, and factory, hospital or school staff room - indeed any location where saving time and money is important.

2.Safe, Hygienic and Energy Efficient

This range of wall-mounted water boilers are permanently plumbed, electric water heaters with an insulated hot water container. Water is heated by an electric heating element and the temperature is controlled within predetermined limits. As boiling water is drawn off, the unit refills with cold water. The replenishment rate allows the element to heat the incoming water as it enters the container so that it only dispenses water at the required temperature.

3.Steam Free and Convenient on Tap Boiling Water

Any steam generated during the heat up cycle is condensed and retained within the unit. During the normal operation of the KW series Water Boiler, the vent/overflow connection may discharge small quantities of steam and condensate, so it is ESSENTIAL that the drain pipe is attached to the vent/overflow connection. This drain pipe must discharge to waste at a point where no scald injury or inconvenience is caused.

4.Fully Automatic

The water is heated in small quantities, so boiling water is available at all times. The electronic control unit constantly controls the water level and the water temperature.

5.Advanced Intelligent Electronic Controls

Technical parameters

Model	Power	Feed pressure	Capacity of hot water	Water supply volume	Weight (kg)	Packing size (mm)	Product size (mm)
2.5L	1800	0.02-1	18	2.5L	8	320×270×420	263×257×365
5L	2000	0.02-1	20	5L	8.9	365×310×505	293×320×448
7.5L	2000	0.02-1	20	7.5L	9.5	365×310×505	293×320×448
10L	2000	0.02-1	20	10L	10.2	395×340×520	323×348×460
15L	2400	0.02-1	24	15L	11.5	415×340×570	328×370×513
25L	3000	0.02-1	30	25L	15.5	485×360×670	353×440×613



Water Boiler Series



UNDER-THE-SINK INTELLIGENT WATER BOILER

Parameter:
Rated voltage : 220/230V 50Hz
Power rating : 2500W
Water tank material : SUS304
Water tank volume : 8.5L
Heating element material : INCOLOY 800
Product size : L×W×H=460×310×382(mm)

Functions:

Hot water: 28l/h, single maximum heat output 7.5L

Warm water: 40l/h, temperature 45-90 degrees, arbitrary adjustment

Product features:

Built in heat recovery system, power saving 70%;

The maximum hot water amount to dispenser once amounts to 7.5L

Warm water temperature 45-90 degrees arbitrary adjustment to match different drinks;

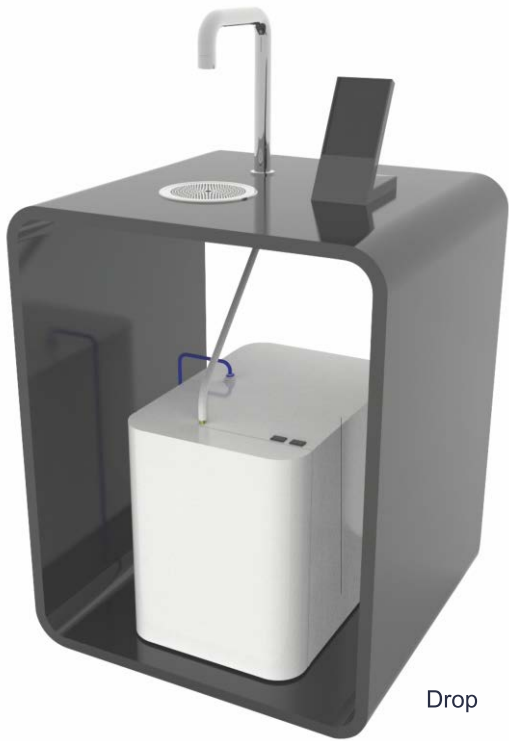
Incoloy 800 electric heating pipe, better quality, long life

The faucet is provided with an anti-ironing device, and the boiled water is not afraid of scalding;

Intelligent Android system control, touch screen easy to operate

Product Appearance:

The full metal shell spraying, and the inlet and outlet port is at the top of the machine. It is more convenient to be taken as a kitchen machine



Drinking Water Fountain Series

YLR-600E Public Chilled Drinking Water Fountain

Maximise a greater 30L/Hr volume of direct chill, mains-fed, freshly filtered water with the new simple and generous appearance.

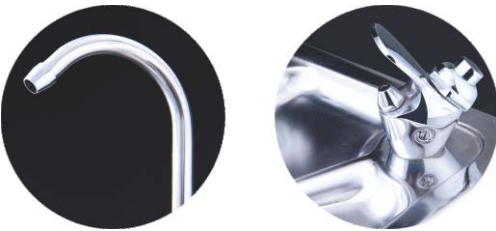
All the shells are 304 Stainless steel materials, internal structure compact and reasonable, It can be widely used in hotels, schools, airports, office buildings, leisure places and public places with large demand for ice water.

Secure your water fountain in busy high-risk environments with its optional wall-fix/floor-fix system and adjustable feet for extra support and reassurance.



YLR-600E

Model	YLR-600E
Dispensers	Cold Water Only
Faucet	1x Swan-neck Tap, 1x Bubbler
Rated Voltage	220-240V/50Hz 110V/ 60Hz
Cooling Capacity	10L/Hr,20L/Hr,30L/Hr
Input Power	120W
Shell Housing Panel	SS304, Thickness 0.8mm
Filtration System	Optional
Fan Cooling System	Condenser Cooling Optional
IEC Cord set & C14 Plug	2M Length
Refrigerant	R134a
Cold Tank	5L, built in evaporator
Blanking plug	Optional
Adjustable Feet	Yes
Packing Dimension	41*32*110cm
Product Dimensions	38 (D) x 29 (W) x 110(H)cm
Loading Quantity	20'/40'ft: 196 / 406 pcs



Drinking Water Fountain Series

YLR-300 Campus Public Drinking Water Platform

Direct Drinking Water Fountain Purification Sytem (UF/RO)



Direct Drinking Water Purification For Elbow Tap



Suitable for ultrafiltration or RO clean water system
Cold Water system optional: cold water 2-15℃
Hot water system optional : hot water 93℃ warm water 30-60℃
Heating power:220V/3KW

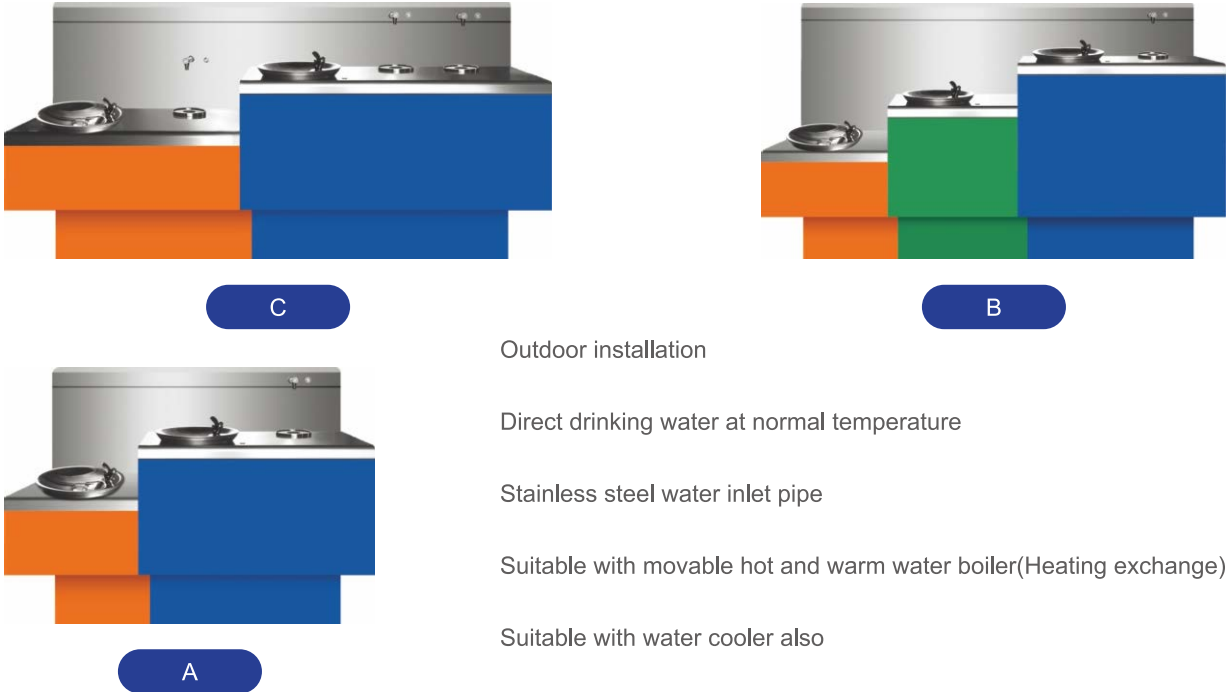
ENERGY-SAVING HEATING EXCHANGE TECHNOLOGY

Model	A	B	C
Push tap	2	3	4
Production Dim(mm)	1080*500*1145	1480*500*1145	1780*500*1145
Package Dim(mm)	1880*580*1225	1560*580*1225	1860*580*1225

Drinking Water Fountain Series

YLR- 400 Outdoor Public Drinking Water Platform

Outdoor Standing Drinking Water Fountain



- Outdoor installation
- Direct drinking water at normal temperature
- Stainless steel water inlet pipe
- Suitable with movable hot and warm water boiler(Heating exchange)
- Suitable with water cooler also

Out doors drinking dispensers are suitable for factory workshop , school, hotel, office buildings, office, station, governmental agencies, dormitory, dining hall etc.

Material: New Stainless Steel 304, Surface wire drawing

Thickness: 1.2- 2mm,different position with different thickness to satisfy the structural strength of the main body

To avoid the rain depositing in the table, the table is designed horizontally 1~2 degree leanning.

- Basin:
- (1) Material: New Stainless Steel 304
 - (2) Thickness: 1.0mm
 - (3) Structure: double layers; screw fixed on the table

Model	A	B	C
Push tap	2	3	4
Production Dim(mm)	1300*1050*1200	1800*1050*1200	2300*1050*1200
Package Dim(mm)	1400*1140*1280	1900*1140*1280	2400*1140*1280